

**Call 501 372-1808
For Household
Income Limits**

Features:

- ☑ Large kitchen
- ☑ Lots of cabinet and counter space
- ☑ Open dining / living area
- ☑ Ample closet space
- ☑ Energy efficient heating and air
- ☑ New energy efficient appliances
- ☑ Energy efficient double pane windows
- ☑ All electric
- ☑ Deadbolts on all entrances
- ☑ Ceiling fans in all rooms
- ☑ Disposals
- ☑ Quiet Street
- ☑ 2 Bedrooms/2 Baths
- ☑ Accessible Units

**EXCEPTIONAL, ENERGY
EFFICIENT, AFFORDABLE,
URBAN HOUSING!**



3100 W. 11th St.
1411/1413 Cedar St.
3118 W. 14th St.
3114 W. 11th St
1802 Allis St.
1505 Schiller St.

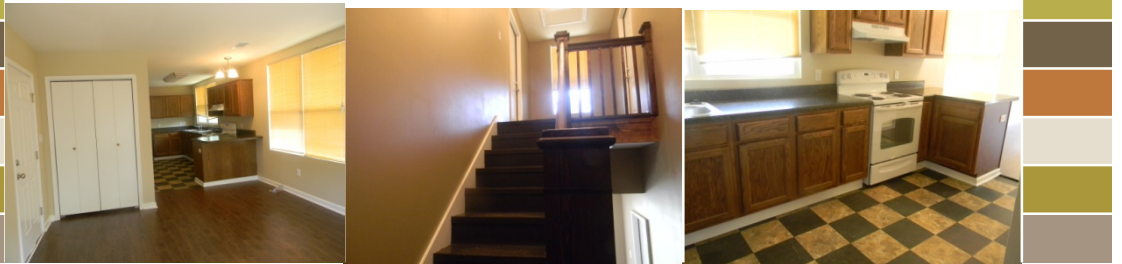
3108 W. 14th St
3805 W 16th
1315 Allis St.
1012 Booker St.
1110 Woodrow St.

1500 Valmar St.
1511 Cedar St.
1822 W. 14th St.
1016 Booker St
1102 Woodrow St.

1804 Marshall St.
1006 Rice St.
3112 W. 11th St.
1718 Booker St.
3115 W. 11th St.,

Rental Homes

**Some apartment homes are
fully accessible!**



MHA is proud to manage the public's largest affordable housing portfolio.

- ✚ Be **the first** to live in one of these beautifully restored or newly constructed apartment homes!!
- ✚ Located minutes from Downtown, River Market, Clinton Library, LR Central High Arkansas Children's Hospital, Arkansas State Capital Complex and much more!!
- ✚ As a resident, **YOU** can help plan the Bethesda Community Garden to be located in the area!!
- ✚ Be a part of an exciting Neighborhood Renaissance!!!!

Please call for a viewing!!

Asset Manager @ 501- 372-1808